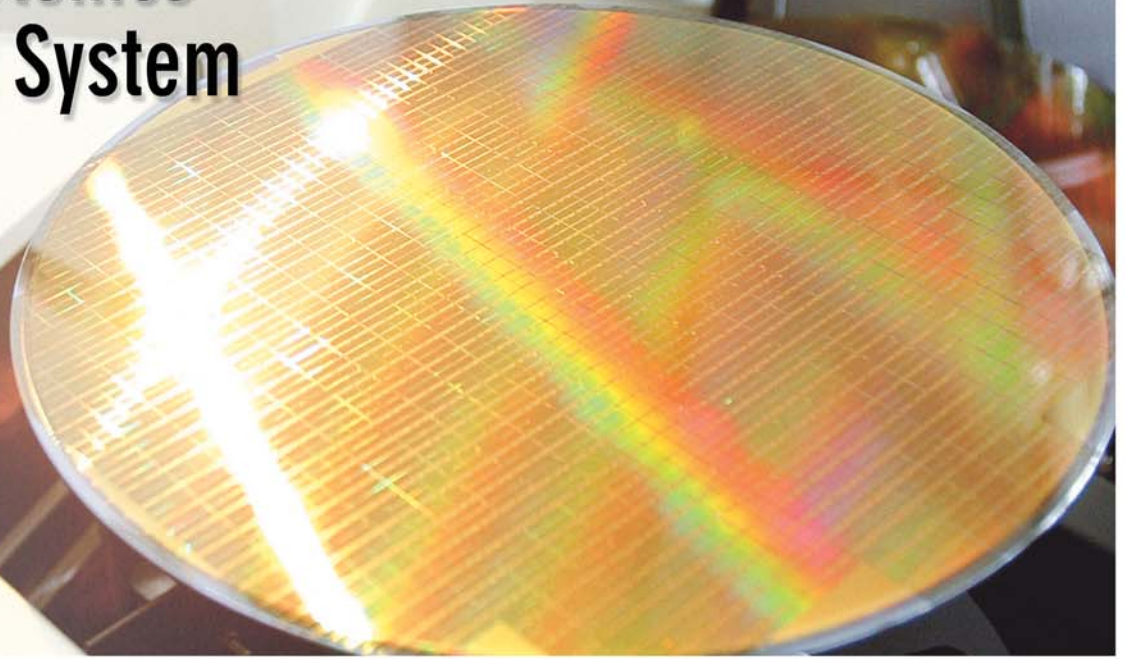


www.fiberpro.com

Silicon Photonics Wafer Test System



- Wafer level tester up to 12 inch wafer
- Automatic input / output coupling (wafer level vertical coupling)
- Coupling to fiber array blocks and / or optical fiber
- Convenient graphic user interface (GUI)
- Versatile alignment functions using image processing and contact sensor
- Automatic height control system



F I B E R P R O



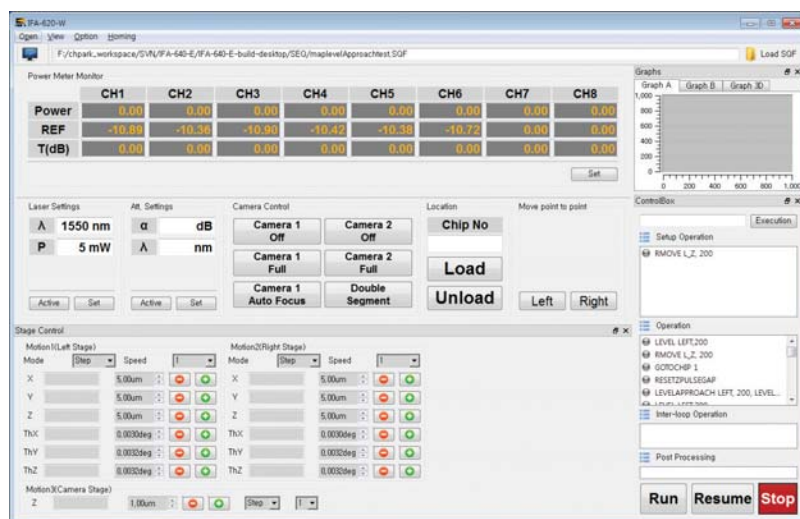
Specifications

Utility Requirement	
Power	220V \pm 10% single phase 50Hz/60Hz 2200VA ¹⁾
Air Pressure	6kgf / cm ² , Ø6 Tube
Vacuum	Ø4 Tube
Total Weight	About 550 kg
Optical Alignment Module	
Stages	3 translational stages and 3 rotational stages
Translation Stages ²⁾	Resolution : 0.05um/pulse
	Repeatability : \pm 0.3 um
Rotational Stages ²⁾	Resolution : 0.16 mdeg./pulse
	Repeatability : \pm 0.003 deg.
Jigs	Fiber array block holder
	Single fiber ³⁾ holder
Displacement Sensor	Displacement sensor for height control
Power Meter Specification	
Wavelength Range	1270 ~ 1630nm
Power Dynamic Range	+5dBm ~ -80dBm
Absolute Accuracy	\pm 0.2dB @ -65dBm
Measurement Frequency	20kHz Max.
Resolution	0.01dB

Probe stations and Anti-vibration table can be chosen according to required performance.

1) 110V version is available 2) 1/20 microstep drive 3) 250um jacketed fiber

Wafer Tester GUI



FIBERPRO Headquarters
FIBERPRO USA
FIBERPRO CHINA
www.fiberpro.com

Tel : +82-42-360-0030
 Tel : +1-408-835-7796
 Tel : +86-27-8663-5497
sales@fiberpro.com

Fax : +82-42-360-0050
 Fax : +1-408-521-0402
 Fax : +86-27-8663-5701